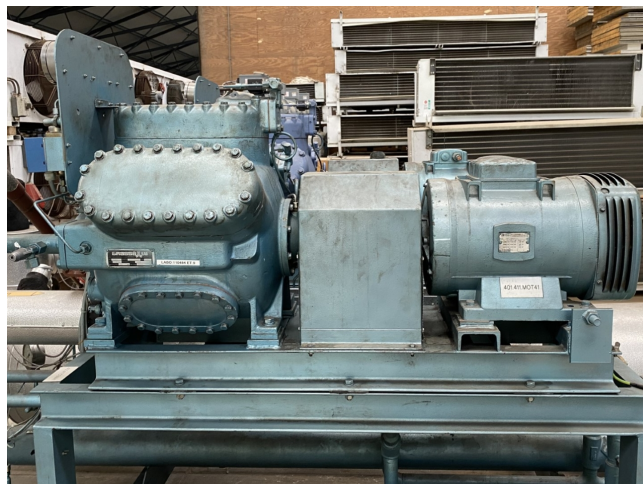


Grasso RC 66

Specifications

Brand	Grasso
Type	RC 66
Refrigerant	Freon
kW at +10°C/+40°C	233,7
kW at 0°C/+40°C	159,7
kW at -5°C/+40°C	129,6
kW at -10°C/+40°C	103,5
kW at -20°C/+40°C	62,1
kW at -30°C/+40°C	33,0
Electromotor Specs	380/400/415 V - 50 Hz - 30 kW - 1440/1450/1455 RPM
On steel base frame	✓
Pressure safety switches	✓
Hp/Lp/Op	
Pressure gauges	✓
Hp/Lp/Op	
Sight Glass	✓
m3 / h	202
Stock	3



Description

Used Grasso RC 66

Used Grasso RC 66 reciprocating compressor on Freon. Complete with a Leroy-Somer PLS180L-T electric motor - 50 Hz - 30 kW - 1440 RPM, pressure and safety switches/gauges. The compressor has a displacement of 202 m³/h.

*Why choose for HOSBV? Were not only the largest used refrigeration specialist in Europe, but also, we deliver all equipment including an extensive test, warranty and industrial cleaning.

*Optional we can also perform a new paint job and arrange the logistics.



